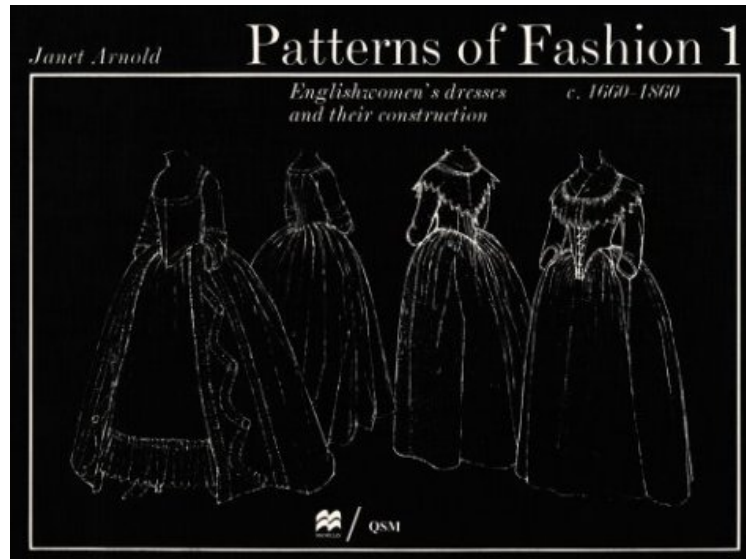


(Mobile pdf) Patterns of Fashion 1: Englishwomen's Dresses and Their Construction C. 1660-1860

Patterns of Fashion 1: Englishwomen's Dresses and Their Construction C. 1660-1860

Janet Arnold

*audiobook / *ebooks / Download PDF / ePub / DOC*



[Download](#)

[Read Online](#)

#191997 in BooksModel: BCAC30605 2005-09-01Original language:EnglishPDF # 1 14.50 x 10.50 x .251,
#File Name: 089676026X76 pagesEnglishwomen's dresses and their construction c.1660-1860A detailed list
of drawings and patterns taken from original specimens | File size: 73.Mb

Janet Arnold : Patterns of Fashion 1: Englishwomen's Dresses and Their Construction C. 1660-1860 before purchasing it in order to gauge whether or not it would be worth my time, and all praised **Patterns of Fashion 1: Englishwomen's Dresses and Their Construction C. 1660-1860**:

0 of 0 people found the following review helpful. Great buy!By CustomerIt is as described! Love it! Has lots of information and patterns. Will be getting the others.0 of 0 people found the following review helpful. A Historical Costuming MustBy DeeAn absolute necessity for your reenactment and/or period costuming needs. There are NO patterns, only diagrams on graph paper so you'll need to enlarge them if you wish to make them up. A little tricky for the novice, but worth the time to work up as they are truly historically accurate.0 of 0 people found the following review helpful. Five StarsBy kemi thompsonExcellent

Written and illustrated by Janet Arnold, **PATTERNS OF FASHION 1** is dedicated to Englishwomen's dresses and their construction, c. 1660-1860.--This unique book contains drawings and patterns taken from (48) original specimens. Examples include a bodice in ivory silk with two details from 1660-1665, a riding habit from 1730-1750, and a wedding dress in ivory silk from 1827-1829.--Additionally, Ms. Arnold brings the following: Pattern cutting and dressmaking, c 1660-1860. A selection of extracts from contemporary sources. A pictorial outline of Englishwomen's costume, c.1660-1860. Drawings and patterns of Englishwomen's dresses, c. 1660-1860 taken from original specimens with details showing their construction Additional material on the cut of early eighteenth-century dresses Metric conversions Using the patterns for full-scale work List of selected books